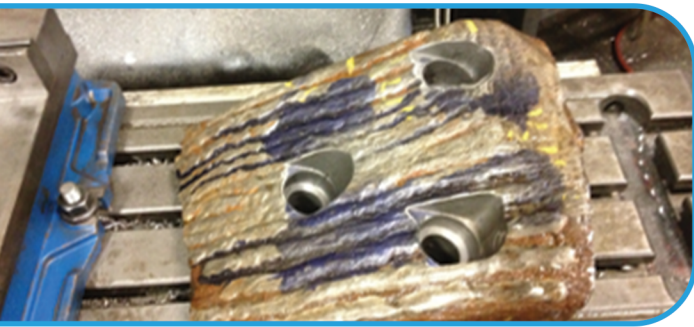


CASE STUDY: Emergency Repairs

Product: Primary Rotary Hammer Crusher

Issue:

- ✓ Wedge Clamp Support Anvil broke off the main rotor.
- ✓ After Anvil broke the hammer was bouncing and damaged the rest of the rotor.
- ✓ Operations was shutdown with cost and lead-time for a new rotor to be procured.



Failure analysis determined:

- ✓ Poor clamping arrangement.
- ✓ Inadequate hammer back face support.
- ✓ Worn out rotor datum areas that retain hammer reliability.

Resolution Process:

- ✓ Design mechanical clamping process.
- ✓ Research base material for weld procedures on rotor base.
- ✓ Provide stress relief techniques to prevent weldment cracking.
- ✓ Weld hard facing.
- ✓ Install new hammers.



Outcome:

- ✓ Emergency turnaround provided in a few days.
- ✓ Customer was able to order a new rotor and schedule for planned downtime replacement of equipment without affecting production plans.
- ✓ Repaired rotor was used for over one year prior to new replacement.

FOR A QUOTE OR TO TOUR OUR REFURB MANUFACTURING FACILITY, CONTACT:

Steve Fraunhofer / sfraunhofer@anthonymachine.com / (210) 355-8157

David Mireles / dmireles@anthonymachine.com / (210) 478-0729

Eugene Ponomarev / Eponomarev@anthonymachine.com / (210) 422-1125