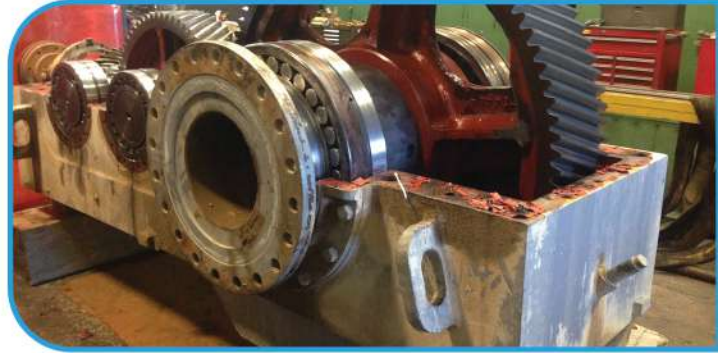


CASE STUDY: Reverse Engineer and Parts Replacement

Product: Gearbox

Issue:

- ✔ Gearbox malfunctioning.
- ✔ Lead time to procure new gearbox would likely cause excessive downtime.



Solution:

- ✔ Disassembled gearbox for preliminary evaluation of the condition and repair required.
- ✔ Estimated parts replacement and reverse engineered parts and labor required for gearbox rebuild.
- ✔ Failure analysis completed during complete disassembly and evaluation of the component wear and damage.

Outcome:

- ✔ Rebuilt worn out and damaged surfaces.
- ✔ Reverse engineered and manufactured new parts when OEM parts were unavailable or lead time was not acceptable.
- ✔ Assembled the gearbox per OEM specification and engineering instructions assuring required fit of components and considering field application of the gearbox.
- ✔ Delivery time reduced from 50 weeks for a new gearbox to 10 weeks.
- ✔ Cost reduced by 60%.



FOR A QUOTE OR TO TOUR OUR REFURB
MANUFACTURING FACILITY, CONTACT:

Steve Fraunhofer / sfraunhofer@anthonymachine.com / (210) 355-8157

David Mireles / dmireles@anthonymachine.com / (210) 478-0729

Eugene Ponomarev / Eponomarev@anthonymachine.com / (210) 422-1125